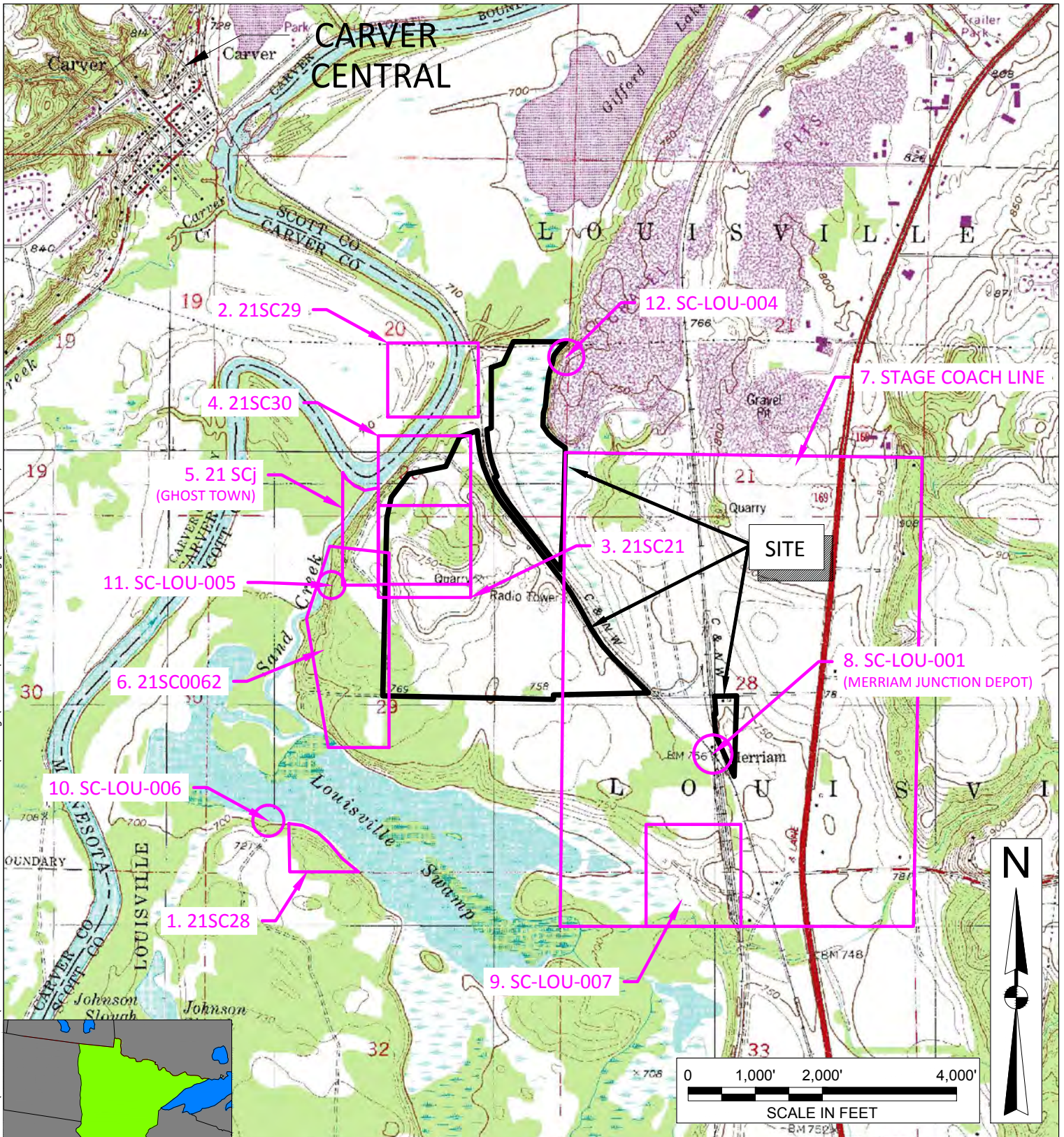


© 2014 - GZA GeoEnvironmental, Inc. GZA-1\152100to152199\152160.70-MINNESOTA VALLEY SAND\DRAWINGS\Drawings(AutoCAD)\SITE LOCATION.dwg [FIG 22] March 10, 2015 - 9:20am kara.kunz



SOURCE: U.S.G.S. SHAKOPEE, MINN. QUADRANGLE MAP (1958)
 SOURCE: U.S.G.S. JORDAN EAST, MINN. QUADRANGLE MAP (1981)
 SOURCE: U.S.G.S. VICTORIA, MINN. QUADRANGLE MAP (1958)
 SOURCE: U.S.G.S. JORDAN WEST, MINN. QUADRANGLE MAP (1981)

PREPARED BY: **GZA GeoEnvironmental, Inc.**
 Engineers and Scientists
 20900 SWENSON DRIVE, SUITE 150
 WAUKESHA, WISCONSIN 53186
 (262) 754-2560

PREPARED FOR:
FAIRMOUNT SANTROL

PROJ MGR: MJK REVIEWED BY: MJK CHECKED BY: CR
 DESIGNED BY: CR DRAWN BY: KLK SCALE: 1 : 40000

NOTES

1. ARCHAEOLOGICAL RESOURCE LOCATIONS WERE OBTAINED FROM SUNDE ENGINEERS, FEBRUARY 10, 2012, SCOPING ENVIRONMENTAL ASSESSMENT WORKSHEET, MERRIAM JUNCTION SANDS FIGURE 22, ARCHAEOLOGICAL RESOURCES.

NO.	ISSUE/DESCRIPTION	BY	DATE

ARCHAEOLOGICAL RESOURCES

**SCOPING EAW
 MINNESOTA VALLEY SAND
 SHAKOPEE, MINNESOTA**

**FIGURE
 21**

SHEET NO.

DATE: 1/24/15 PROJECT NO.: 20.0152160.70 REVISION NO.:

UNLESS SPECIFICALLY STATED BY WRITTEN AGREEMENT, THIS DRAWING IS THE SOLE PROPERTY OF GZA GEOENVIRONMENTAL, INC. (GZA). THE INFORMATION SHOWN ON THE DRAWING IS SOLELY FOR USE BY GZA'S CLIENT OR THE CLIENT'S DESIGNATED REPRESENTATIVE FOR THE SPECIFIC PROJECT AND LOCATION IDENTIFIED ON THE DRAWING. THE DRAWING SHALL NOT BE TRANSFERRED, REUSED, COPIED, OR ALTERED IN ANY MANNER FOR USE AT ANY OTHER LOCATION OR FOR ANY OTHER PURPOSE WITHOUT THE PRIOR WRITTEN CONSENT OF GZA. ANY TRANSFER, REUSE OR MODIFICATION TO THE DRAWING BY THE CLIENT OR OTHERS, WITHOUT THE PRIOR WRITTEN EXPRESS CONSENT OF GZA, WILL BE AT THE USER'S SOLE RISK AND WITHOUT ANY RISK OR LIABILITY TO GZA.