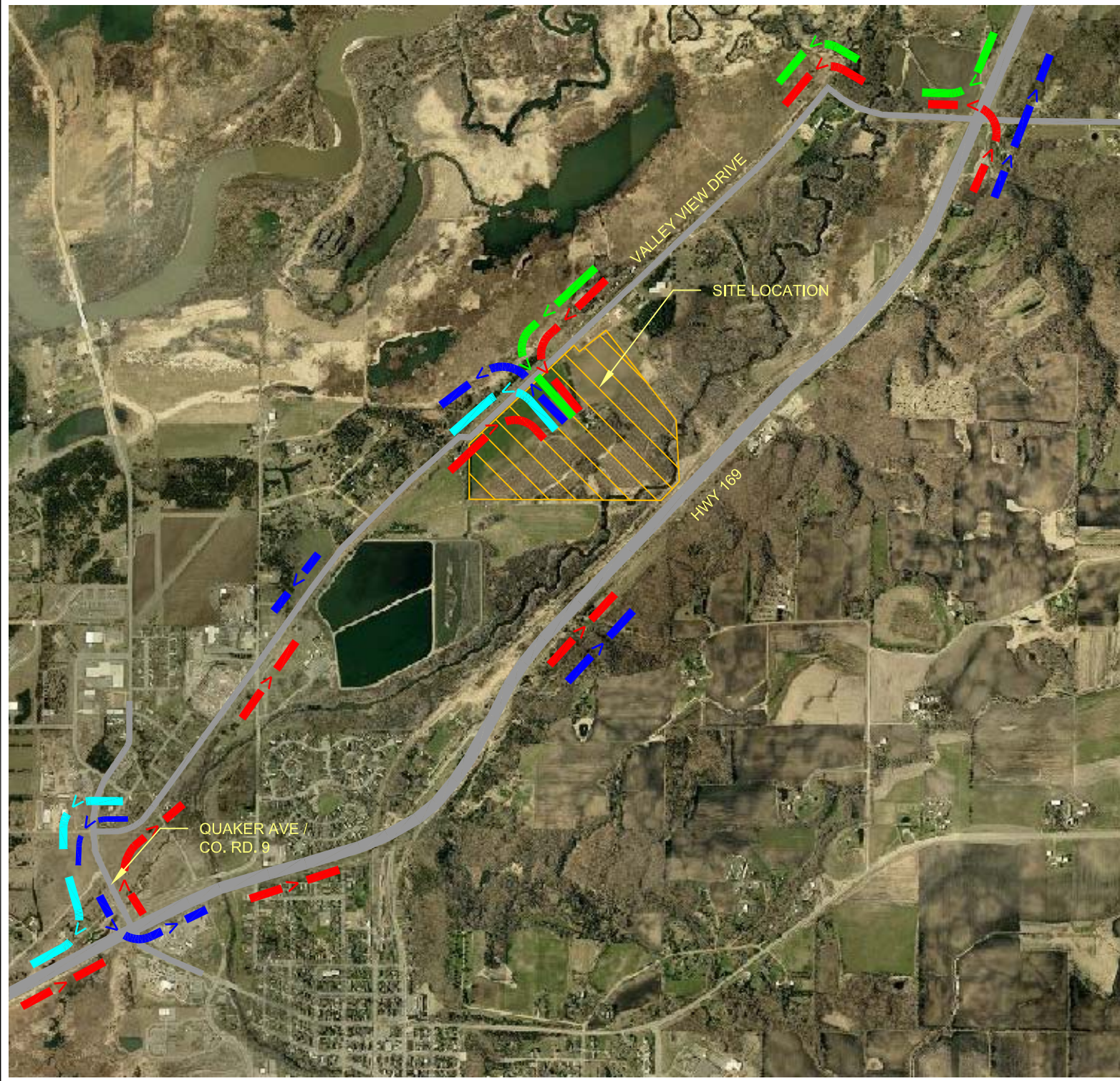


P:\Projects\HEN\HEN0901\_Keefe\dwg\Haul Route Map.dwg, 12/30/2010 10:09:40 AM

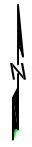


**LEGEND**

- > — NORTHBOUND INBOUND TRUCK TRAFFIC:  
AVERAGE = 11 TPD  
MAX = 22 TPD
- > — NORTHBOUND OUTBOUND TRUCK TRAFFIC:  
AVERAGE = 43 TPD  
MAX = 88 TPD
- > — SOUTHBOUND INBOUND TRUCK TRAFFIC:  
AVERAGE = 43 TPD  
MAX = 88 TPD
- > — SOUTHBOUND OUTBOUND TRUCK TRAFFIC:  
AVERAGE = 11 TPD  
MAX = 22 TPD

\*NOTE TWO POSSIBLE ROUTES:  
APPROX. 50% TURN LEFT AT QUAKER AVE; OTHER 50% PROCEED NORTH TO 173RD ST.

TPD = ONE-WAY TRIPS PER DAY



APPROXIMATE SCALE:  
1inch = 1840 feet

**McCain** 5300 Hwy 12 55359  
and Associates, Inc. Maple Plain, MN  
ph 952-346-3900  
fx 952-346-3901

**FIGURE 15**  
**HAUL ROUTES**

JORDAN AGGREGATES PROPOSED MINE SITE  
SAND CREEK TWP., MN